

# waterpik PowerSpray<sup>+</sup>

SHOWER HEAD  
ITM. / ART. 102442

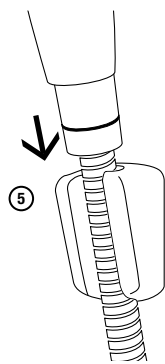
Model Number: LZR-453TW

## Instruction Manual

**IMPORTANT: RETAIN FOR FUTURE REFERENCE, READ CAREFULLY**

FN 20020199-F AB

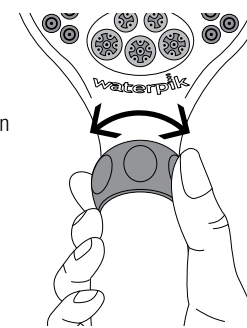
- Turn on the water and check for leaks. If leaks are visible at hose connections tighten connections and re-test.
- If there is an existing wall bracket in your bathroom, place shower head handle in the bracket to test fit of the hose and the spray direction.
- If the shower head position and spray direction are acceptable in your current bracket, installation is complete.
- If the shower head angle or position is not acceptable, use the following instructions to replace your current bracket with the 3-position shower bracket provided.



### OPERATION

#### Spray Selector:

Spray Selector allows you to select from various spray patterns. Spray pattern is controlled by rotating the innovative ring on the shower handle in either direction.



You can access more information on your product at [www.waterpik.com](http://www.waterpik.com).

### LIMITED ONE YEAR WARRANTY

Water Pik, Inc. warrants to the original purchaser of this product that it is free from defects in material and workmanship for a period of one year from date of purchase. Water Pik, Inc. will replace at its discretion any part of the product, which in its opinion is defective, provided that the product has not been abused, misused, altered or damaged after purchase. (This includes damage due to use of tools or harsh chemicals.) In the event an item has been discontinued we will replace with what we deem to be the closest product. Water Pik, Inc. is not responsible for labour charges, installation, or other consequential cost. The responsibility of Water Pik, Inc. shall not exceed the original purchase price of the product. This warranty gives you specific legal rights. You may also have other rights that vary where you reside.

Save your receipt as proof of purchase is required for warranty action.

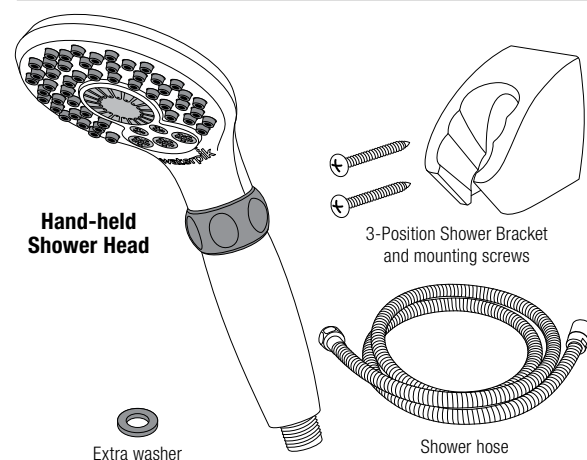
#### Have any questions or need assistance?

For quick service have your model number and receipt ready.

Email: [service@waterpik.com](mailto:service@waterpik.com)

Thank you for purchasing this Waterpik® shower head. This booklet will give you the information to make installation easy and quick. You are close to enjoying a powerful and invigorating shower experience with your new Waterpik® shower head.

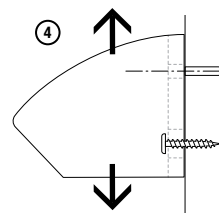
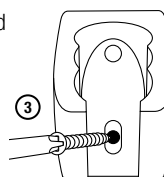
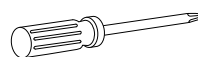
### COMPONENTS



### 3-POSITION SHOWER BRACKET

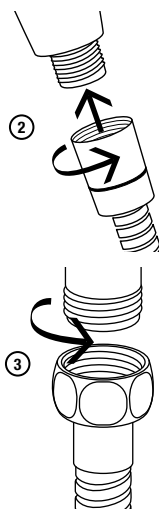
**Tools you will need:** Screwdriver.

- Remove current bracket by unscrewing the screws.
- Position new shower head bracket so that holes in back align with existing wall anchor holes.
- Using a screwdriver, insert one of the provided screws through the bottom slot into the lower wall anchor. Do not tighten completely.
- Slide the bracket up or down to align the top hole with upper wall anchor.

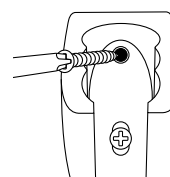


### INSTALLATION

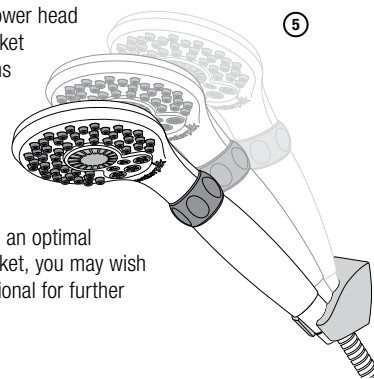
- Remove current hand shower and hose from existing fixture.
- Attach Waterpik® hand shower to hose connector with rubber ring by turning the hose connector onto the threaded connection at the base of handle.
- Connect hose end with hexagonal connector to existing water supply.



Using a screwdriver, insert the other screw through top hole into upper anchor. Tighten both screws securely. **Do not over tighten.**



- Place hand-held shower head in bracket. The bracket allows three positions to enable you to achieve an angle of your preference.
- NOTE:** If your existing wall anchor holes do not provide an optimal position for the bracket, you may wish to contact a professional for further installation.



### TROUBLESHOOTING GUIDE

Problem	Solution
No water flow from installed shower head.	Check hose ends to clear any blockage.
Low water pressure or missing spray patterns.	Clean shower head in vinegar/water solution. (See care & cleaning section).
Leaking at shower head/hose connection.	Check to make sure rubber washer is present inside the hose. Exchange current washer with the extra washer, or stack the washers on top of each other.

#### WARNINGS:

- To avoid hot water dangers and conserve even more energy, make sure your water heater is set at 48.9°C (120°F) or below.
- Test the shower water with your hand before bathing.
- For additional safety for Ecoflow® or high efficiency shower heads, it is recommended that all homes have installed a pressure balance shower valve with the rotational limit stops properly set by a plumber.
- Always ensure the handheld shower head is properly placed in the bracket, so as to prevent the shower head from falling.

- Do not pull on or tug the flexible hose. This may result in the shower head coming loose and falling.

### CARE AND CLEANING

- To maintain proper working conditions cleaning is required when mineral deposits appear on the spray orifices. To clean mineral deposits, gently rub the rubber nozzles on the face of the shower head to dislodge.
- To clean heavier deposits, remove shower head and soak face down in 1-2 cups of white vinegar (use white vinegar only) for about 2-3 hours. Replace shower head and run in each mode to flush out vinegar.
- Do not clean or rinse any part with harsh chemicals, heavy duty cleaners, or abrasives; this may damage parts or finish and will void warranty.

Waterpik® is a trademark of Water Pik, Inc. registered in Argentina, Australia, Austria, Benelux, Canada, Chile, China, Czech Republic, EU, Finland, France, Germany, Hong Kong, Hungary, India, Italy, Japan, Korea, Mexico, Norway, Poland, Russian Federation, South Africa, Spain, Sweden, Switzerland, Turkey, Ukraine, and the United States.

Waterpik® (stylized) is a trademark of Water Pik, Inc. registered in Australia, Canada, China, EU, Hong Kong, India, Japan, Korea, Mexico, Russian Federation, Switzerland, and the United States.

Ecoflow® is a trademark of Water Pik, Inc. registered in Australia, Canada, China, EU, Hong Kong, Mexico, and the United States.

OptiFlow® is a trademark of Water Pik, Inc. registered in Australia, Canada, China, EU, Hong Kong, India, Japan, Korea, Mexico and the United States.

EasySelect® is a trademark of Water Pik, Inc. registered in Australia, Canada, China, EU, Mexico, and the United States.

A Powerful and Invigorating Experience® is a trademark of Water Pik, Inc. registered in Canada and the United States.

The Plus is in the Power® is a trademark of Water Pik, Inc. registered in Canada and the United States.

© 2015 Water Pik, Inc.

Made in China. Printed in China.

**Water Pik, Inc.**  
1730 East Prospect Road  
Fort Collins, CO 80553-0001  
U.S.A.

# waterpik PowerSpray<sup>+</sup>

蓮蓬頭  
ITM. / ART. 102442

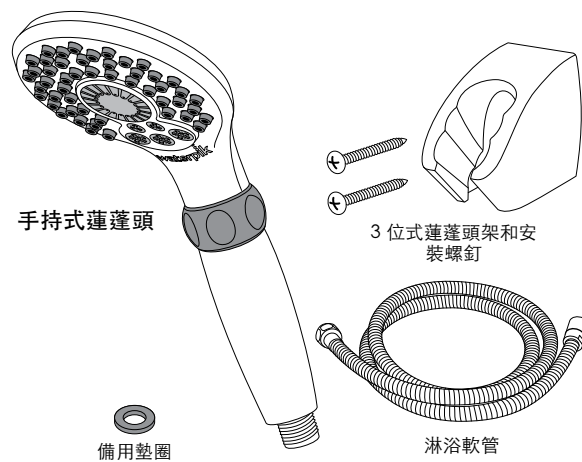
型號：LZR-453TW

## 說明書

重要提示：請仔細閱讀此說明書，並保留作將來參考

感謝購買此款 Waterpik® 蓮蓬頭。這本小冊子將為您提供一些資訊，以便您進行簡單快速的安裝。您很快就可以使用您的新 Waterpik® 蓮蓬頭享受強大而爽快的淋浴體驗。

### 組件

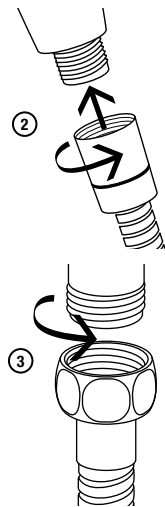


### 安裝

1. 將當前的手持蓮蓬頭軟管從現有設備上拆除。

2. 將軟管連接器轉到把手底部的螺紋連接上，以便將 Waterpik® 手持蓮蓬頭裝到帶橡膠圈的軟管連接器上。

3. 用六角連接器將軟管端部連接至現有的供水系統。

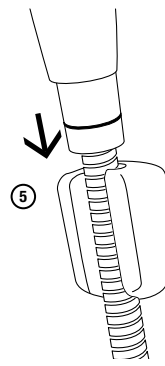


4. 打開水，檢查是否洩露。如果軟管連接處有可見洩露，緊固連接，然後重新測試。

5. 如果您的浴室中已有牆壁托架，請將蓮蓬頭把手放入托架中以測試軟管是否合適以及噴灑方向。

6. 如果蓮蓬頭位置和噴灑方向在您當前的托架中是可以接受的，則安裝完成。

7. 如果蓮蓬頭角度或位置不可接受，請按照以下說明用提供的 3 位式蓮蓬頭架更換您當前的托架。



### 3 位式蓮蓬頭架

您需要的工具：螺絲起子。

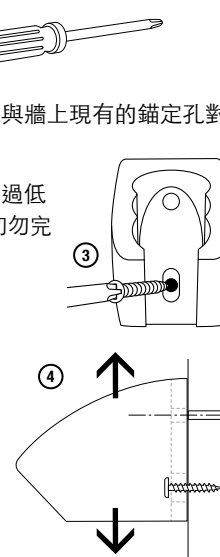
1. 擰開螺釘，拆除當前托架。
2. 定位新蓮蓬頭托架，使後面的孔與牆上現有的錨定孔對齊。
3. 用螺絲起子將提供的一個螺釘透過低槽插入到牆上較低的錨點中。切勿完全鎖緊。

4. 向上或向下滑動托架，使頂部的孔與牆上較高的錨點對齊。

用螺絲起子將另一個螺釘透過頂部的孔插入到較高的錨點中。安全緊固兩個螺釘。切勿過度鎖緊。

5. 將手持式蓮蓬頭放入托架中。托架上有三個位置，您可以透過這三個位置獲得您喜歡的角度。

注：如果您牆上現有的錨孔不能為托架提供最佳位置，您可以與專業人員聯絡進行進一步安裝。

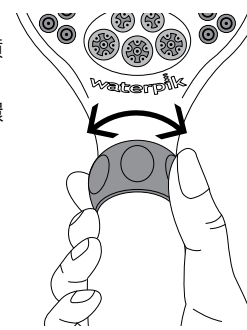


### 操作

噴灑選擇器：

噴灑選擇器使您能夠選擇多種噴灑模式。噴灑模式可透過向任意方向旋轉噴灑把手上的創新環來控制。

您可以造訪 [www.waterpik.com](http://www.waterpik.com) 了解有關您的產品的更多資訊。



### 故障排除指南

問題	解決方案
安裝的蓮蓬頭無水流出。	檢查軟管端頭，清除任何堵塞。
水壓較低或噴灑模式失靈。	在醋/水溶液中清潔蓮蓬頭。 (請參閱護理與清潔章節)。
蓮蓬頭/軟管連接處漏水。	檢查以確保橡膠墊圈位於軟管內部。 用備用墊圈替換當前的墊圈，或者將墊圈疊放在一起。

警告：

1. 為避免熱水危險和節約更多能源，請確保您的熱水器的設置溫度為 48.9° C (120° F) 或更低。
2. 淋浴之前用您的手測試淋浴水。
3. 為了使 Ecoflow® 更加安全或蓮蓬頭更加高效，建議每個家庭都由水管工正確地設置加裝旋轉限制器的壓力平衡淋浴閥。
4. 務必確保手持式蓮蓬頭正確放置在托架中，以防蓮蓬頭墜落。

5. 請勿拉或拖拽柔性軟管。這可能會導致蓮蓬頭鬆動和墜落。

### 護理與清潔

- 為保持適當的運作狀態，當噴孔上出現物質堆積時需進行清潔。若要清潔堆積物質，請輕輕地擦拭蓮蓬頭表面的橡膠噴嘴以將堆積物質清除。
- 若要清潔較厚的堆積物，請拆除蓮蓬頭，然後將蓮蓬頭表面向下置於 1-2 杯白醋（僅適用白醋）中浸泡 2-3 小時。更換蓮蓬頭，然後在每個模式下運行以沖掉白醋。
- 請勿用任何刺激性化學物品、清理清潔劑或研磨材料清潔或沖洗任何部分，這可能會損壞部件或表面處理並使保固無效。

### 一年有限保固

Water Pik, Inc. 向本產品的原始購買者保證，本產品自購買之日起一年內無任何材料和工藝缺陷。如果產品在購買後沒有被濫用、誤用、改變或受損，（這包括因使用工具或腐蝕性化學品造成的損壞）則 Water Pik, Inc. 將自行決定是否更換任何有瑕疵的零件。如果某個物品已經停產，我們將用我們認為最相近的產品進行更換。Water Pik, Inc. 對人工費用、安裝或其他後續費用不承擔任何責任。Water Pik, Inc. 的責任應不超過本產品的原始購買價格。本保證賦予您特定的法定權利。您可能還具有其他權利，這將因您的居住地而異。

保固服務將需要您保留的消費收據以作為購買憑證。

還有其他問題或需要幫助嗎？

若要獲得快速服務，請準備好您的產品型號和收據。

電子郵箱：[service@waterpik.com](mailto:service@waterpik.com)

Waterpik® 是 Water Pik, Inc. 在阿根廷、澳洲、奧地利、比荷盧經濟聯盟、加拿大、智利、中國、捷克共和國、歐盟、芬蘭、法國、德國、香港、匈牙利、印度、意大利、日本、南韓、墨西哥、挪威、波蘭、俄羅斯、南非、西班牙、瑞典、瑞士、土耳其、烏克蘭以及美國註冊的一個商標。

Waterpik® (程式化) 是 Water Pik, Inc. 在澳洲、加拿大、中國、歐盟、香港、印度、日本、南韓、墨西哥、俄羅斯、瑞士以及美國註冊的一個商標。

Ecoflow® 是 Water Pik, Inc. 在澳洲、加拿大、中國、歐盟、香港、印度、日本、南韓、墨西哥以及美國註冊的一個商標。

OptiFlow® 是 Water Pik, Inc. 在澳洲、加拿大、中國、歐盟、香港、印度、日本、南韓、墨西哥以及美國註冊的一個商標。

EasySelect® 是 Water Pik, Inc. 在澳洲、加拿大、中國、歐盟、墨西哥以及美國註冊的一個商標。

A Powerful and Invigorating Experience® 是 Water Pik, Inc. 在加拿大和美國註冊的一個商標。

The Plus is in the Power® 是 Water Pik, Inc. 在加拿大和美國註冊的一個商標。

© 2015 Water Pik, Inc.

中國製造。中國印刷。

**Water Pik, Inc.**

1730 East Prospect Road  
Fort Collins, CO 80553-0001  
U.S.A.