

# Operation Instructions

產品說明書

FECA

bathroom | kitchen | living room

21-A

## Warnings 注意事項

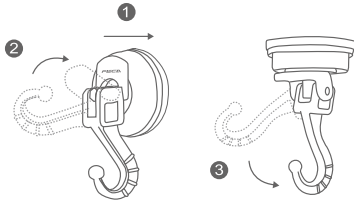
- 請勿超過標示負載重量。  
Do not overload.
- 使用前需清潔吸附面，避免髒污影響吸附力。  
Clean and dry the contact surface to avoid any negative effects of suction function.
- 不適合用於水泥牆、大理石、花崗岩、木板、牆紙、無釉瓷磚、破裂的瓷磚或任何透氣表面。  
Not suitable for cement wall, marble, granite, wood board, wallpaper, tiles without glazed process, cracked tiles or any porous surface.
- 請勿吸附小於吸盤之表面，凹凸面段差請勿超過0.4mm。  
Not suitable for surface which is smaller than the rubber pad, or surface with a roughness over 0.4mm.
- 本產品吸附力強，若長時間吸附於輕薄表面，可能造成變形。  
Due to strong suction, it may lead to damage if the product is attached on thin surface for a long period.
- 為使吸盤保持良好狀態，未吸附時請卸除壓板，以保持橡膠墊平整。  
To keep the suction cup in good condition, please release the lock when it is not in use or attached to the contact surface.
- 商品售出後，如經拆封使用導致商品不完整，恕無法退換。  
Kindly note that we are unable to exchange or refund if your merchandise is found to be damaged after use.

## Instructions 操作說明

1



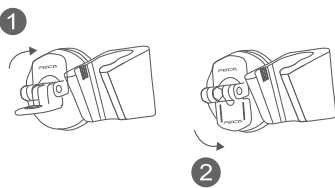
Double locking 雙扣式 (一)



2



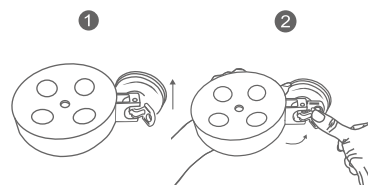
Double locking 雙扣式 (二)



3



Double locking 雙扣式 (三)



## Product Features 產品特色



1. 將吸附面擦拭乾淨。
2. 吸盤向吸附面按壓2~3秒，使空氣排出。
3. 拉起掛勾往上壓至底部，即可扣緊壓板。
4. 確認完全吸附後，放下掛勾，方可使用。

適用產品項目：4404XX, 441011, 4411XX, 4413XX, 441631 系列商品

1. Clean and dry the contact surface before attaching the suction cup.
2. Strongly press and hold the suction cup for 2~3 seconds to remove the air underneath.
3. Lift the hook and press forward, then pull it back and down for double locking while pressing on the cup.
4. Make sure it is firmly attached to the surface before use.

Suitable Products : 4404XX, 441011, 4411XX, 4413XX, 441631

1. 將吸附面擦拭乾淨。
2. 吸盤向吸附面按壓2~3秒，使空氣排出。
3. 先將上方壓板往上扣至底部，再把下方壓板向下扣至底部。
4. 確認完全吸附後，放下掛勾，方可使用。

適用產品項目：440131, 440121 系列商品

1. Clean and dry the contact surface before attaching the suction cup.
2. Strongly press and hold the suction cup for 2~3 seconds to remove the air underneath.
3. Push down the upper lock and then lower one while pressing on the cup.
4. Make sure it is firmly attached to the surface before use.

Suitable Products : 440131, 440121

1. 將吸附面擦拭乾淨。
2. 吸盤向吸附面按壓2~3秒，使空氣排出
3. 將皂盤朝壓板方向推移至底部，可扣緊壓板。
4. 確認完全吸附後，方可使用。

適用產品項目：441531, 441751, 442131 系列商品

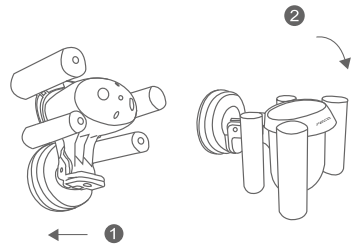
1. Clean and dry the contact surface before attaching the suction cup.
2. Strongly press and hold the suction cup for 2~3 seconds to remove the air underneath.
3. Push the holder toward the lock then press down while pressing on the cup.
4. Make sure it is firmly attached to the surface before use.

Suitable Products : 441531, 441751, 442131

4



Single locking 單扣式 (一)



1. 將吸附面擦拭乾淨。
2. 吸盤向吸附面按壓2~3秒，使空氣排出。
3. 將牙刷架朝壓板方向推移至底部，可扣緊壓板。
4. 確認完全吸附後，方可使用。

適用產品項目：441541, 442161 系列商品

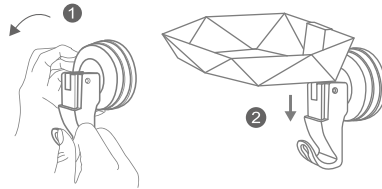
1. Clean and dry the contact surface before attaching the suction cup.
2. Strongly press and hold the suction cup for 2~3 seconds to remove the air underneath.
3. Hold the toothbrush holder then push it down while pressing on the cup.
4. Make sure it is firmly attached to the surface before use.

Suitable Products : 441541, 442161

5



Single locking 單扣式 (二)



1. 將吸附面擦拭乾淨。
2. 吸盤向吸附面按壓2~3秒，使空氣排出。
3. 將壓板往下扣緊至底部，確認完全吸附。
4. 將皂盤對準壓板插槽插入，方可使用。

適用產品項目：441511

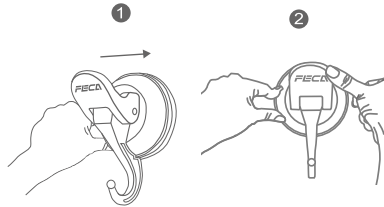
1. Clean and dry the contact surface before attaching the suction cup.
2. Strongly press and hold the suction cup for 2~3 seconds to remove the air underneath.
3. Push down the lock while pressing on the cup. Make sure it is firmly attached to the surface.
4. Fix the soap holder on the slot of lock before use.

Suitable Products : 441511

6



Single locking 單扣式 (三)



1. 將吸附面擦拭乾淨。
2. 吸盤向吸附面按壓2~3秒，使空氣排出。
3. 將壓板扣緊至底部，確認完全吸附後，方可使用。

適用產品項目：4405XX, 4406XX, 4424XX, 4426XX, 4436XX 系列商品

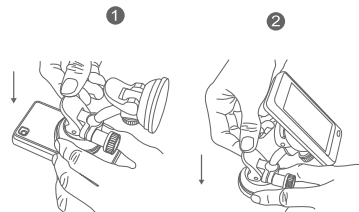
1. Clean and dry the contact surface before attaching the suction cup.
2. Strongly press and hold the suction cup for 2~3 seconds to remove the air underneath.
3. Push down the lock while pressing on the cup. Make sure it is firmly attached to the surface before use.

Suitable Products : 4405XX, 4406XX, 4424XX, 4426XX, 4436XX

7



Single locking 單扣式 (四)



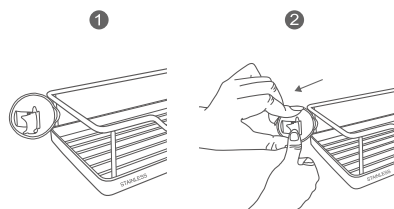
1. 將吸附面擦拭乾淨。
2. 吸盤向吸附面按壓2~3秒，使空氣排出。
3. 將壓板扣緊至底部，確認完全吸附後即可。
4. 調整支撐桿至適當角度，旋緊後方可使用。

適用產品項目：4441XX 系列商品

1. Clean and dry the contact surface before attaching the suction cup.
2. Strongly press and hold the suction cup for 2~3 seconds to remove the air underneath.
3. Push down the lock while pressing on the cup. Make sure it is firmly attached to the surface.
4. Adjust two knobs for proper angles and rotate tightly before use.

Suitable Products : 4441XX

8

Single locking (wire type)  
單扣式鐵架類

1. 將吸附面擦拭乾淨。
2. 將吸盤凹槽扣在鐵架上固定後吸附。
3. 吸盤向吸附面按壓2~3秒，使空氣排出，將壓板扣緊至底部，確認完全吸附後即可。

適用產品項目：4201XX, 4202XX, 4203XX, 4204XX, 4206XX 系列商品

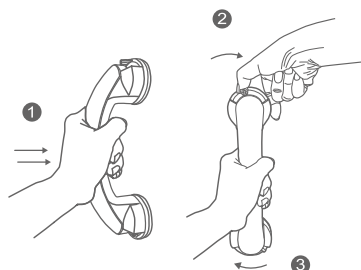
1. Clean and dry the contact surface before attaching the suction cup.
2. Fit the back rail of the rack into a slot in the suction cup.
3. Strongly press and hold the suction cup for 2~3 seconds to remove the air underneath. Push down the lock while pressing on the cup. Make sure it is firmly attached to the surface before use.

Suitable Products : 4201XX, 4202XX, 4203XX, 4204XX, 4206XX

9



Lever type 撥桿式



1. 將吸附面擦拭乾淨。
2. 吸盤向吸附面按壓2~3秒，使空氣排出。
3. 以順時鐘方向推移上下旋鈕撥桿至底部扣緊，確認完全吸附後，方可使用。

適用產品項目：441801, 442141, 4429XX 系列商品

1. Clean and dry the contact surface before attaching the suction cup.
2. Strongly press and hold the suction cup for 2~3 seconds to remove the air underneath.
3. Press both locks clockwise for fixing the suction cups. Make sure it is firmly attached to the surface before use.

Suitable Products : 441801, 442141, 4429XX