

控制面板 (H) 圖標圖例

- S** (設定按鈕) — 設定日曆; 鬧鐘模式下, 按此按鈕關閉鬧鐘。
- M** (模式按鈕) — 按此按鈕設定鬧鐘和貪睡模式。
- ^** (向上按鈕) — 在設定模式中, 按此按鈕上調。
- ▼** (向下按鈕) — 在設定模式中, 按此按鈕下調。

注意! 充電期間設備可能發熱。這是正常現象, 也是充電過程的一部分。充電時間因設備而異。

更換電池

- 本檯燈使用CR2032電池。更換電池的方法可參考圖3。
- 電池盒位於燈體 (C) 的後側。
- 拿出/安裝鈕扣電池: 用螺絲刀擰出螺絲, 然後在檯燈後側的燈體 (C) 下部取下電池盒蓋。逆時針旋轉螺絲可以將其擰出, 順時針旋轉可以安裝螺絲。安裝鈕扣電池時應保持「+」或平坦一面朝上。

安全警告:

- 小心: 請勿吞食電池, 有化學灼傷危險。
- 本檯燈包含一顆鈕扣電池。如果不慎吞食鈕扣電池, 只需兩小時即可可能造成嚴重體內損傷, 甚至可能導致死亡。
- 請勿讓孩童接觸到新舊電池。
- 如果電池盒沒有關緊, 請停止使用本品, 請勿讓孩童接觸。
- 若您認為電池可能已經不慎誤吞或放入體內, 請立即求醫。

注意: 鈕扣電池體積小, 單顆電池的直徑大於高度。

電池處置: 電池處置應當符合當地有關危險材料處置的法規。請勿焚燒。

安全警告: 降低火災, 觸電或人員受傷風險

- 關上檯燈, 等到燈頭 (D) 和適配器 (E) 冷卻後再處理。
- 連續使用數小時後, 燈罩(D)處的LED燈板可能發熱。請勿直接將手放在LED燈板上。
- 除非插頭可以完全插入延長插線板中, 否則請勿使用延長線。
- 請勿改造插頭。
- 本產品附帶的燈頭不得由消費者自行更換。
- 僅供室內使用

注意: 本說明書中出現的重要安全說明, 並不包含所有可能發生的情況。請務必理解, 使用所有電器產品時都須小心。

注意! 如果本燈具的電線損壞, 則應由製造商更換, 以避免危險。僅供室內使用。

注意! 本燈具的燈源不可更換; 燈源達到其使用壽命後, 應整體更換燈具。

小心: 未經OttLite Technologies明確認可的任何更改或改造, OttLite 概不對產品的正常功能負責。

電源適配器規格:

輸入: AC 100–240V, 50/60 Hz, 0.8A
輸出: 24V DC, 1.25A, 直流插頭

本檯燈含一個5V, 2.1A USB輸出接口 (K), 位於檯燈側面。USB接口可以為平板電腦、手機等設備充電。

恭喜!
您選購的全新OttLite® 產品是自然採光技術的最佳產品。

警告: 為防止觸電, 請務必確保在所有組裝步驟完成後再連接電源。

提示: 本品已全部組裝完成。

- 將檯燈從包裝內取出, 平放在穩固的表面上。
- 將電源適配器接入段 (F) 與檯燈底座後側的接口 (G) 相連接。
- 將電源適配器 (E) 插入標準家用插座。注意: 僅限使用隨附的電源適配器, 避免損壞或引起火災。
- 使用檯燈底座(A)上的觸控板(B) 開/關檯燈。
- 觸摸式鍵板含多個「觸摸」按鍵, 可控制檯燈的燈光顏色模式, 調節不同顏色模式下的亮度。這款檯燈設有三種顏色模式和五種亮度選擇。請閱讀觸摸鍵板說明章節, 了解相關操作說明。
- 控制面板 (H) 可用於設定檯燈的日期、鬧鐘設定、顯示屏亮度。請閱讀日曆和時鐘設定節, 了解相關操作說明。
- 如需調整光線照射的角度, 請保持底座 (A) 穩定, 並根據需要調整燈體 (C) 或燈罩 (D)
- 檯燈調節請參考圖1和圖2。注意: 請勿強行將燈罩或燈體移動至超出可調節的範圍, 過度調節可能導致檯燈損壞。

觸摸鍵板 (B) 說明:

給檯燈充電和操作LED設定, 可輕觸所需的「鍵」即可:

- 「開/關」檯燈: 觸摸 鍵。
- 調整亮度: 觸摸 ^ 提高亮度, 觸摸 ▼ 調低亮度。
- 調節燈光顏色模式: 觸摸 M 鍵切換燈光顏色模式: 2700K、4000K、5000K。

日曆和時鐘設定:

注意: 設定日曆和時鐘的控制面板 (H) 位於燈體 (C) 的後側。

- 如需設定時間, 請按S鍵, 進入設定模式, “小時”會先閃爍 ^ 鍵和 ▼ 鍵以調節「小時」, 設定好「小時」後, 再次觸摸S鍵, 分別設定“分鐘”, “年”, “月”和“日”
- 在設定模式下, 觸摸M鍵退出功能設定或操作, 可在一分鐘後停止該模式。
- 在非設定模式下, 按壓 ^ 按鈕切換“12小時”或“24小時”顯示模式。

鬧鐘和貪睡功能設定:

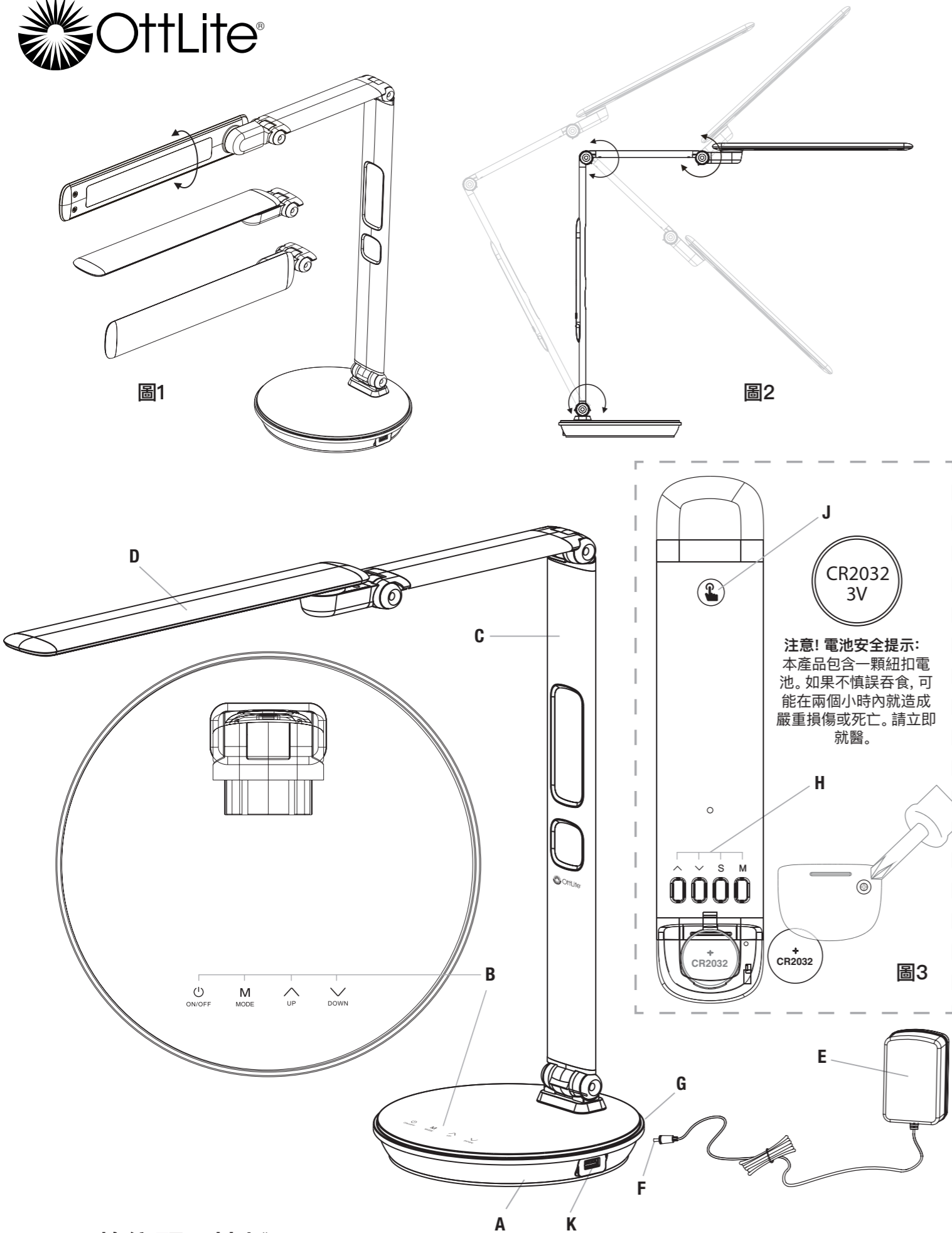
- 如果需要設定鬧鐘時間, 按壓控制面板(H)處的M按鈕, 啟動鬧鐘設定模式。在鬧鐘模式下, 觸摸**S**按鈕設定鬧鐘時間順序: 「時」、「分」、「貪睡」、「音樂」, 然後退出。
- 觸摸 ^ (向上) 按鈕和 ▼ (向下) 按鈕, 調整鬧鐘時間順序。
- 如需啟動鬧鐘, 請按**M** 按鈕以啟動鬧鐘設定模式, 然後按 ^ (向上) 和 ▼ (向下) 按鈕啟動/關閉鬧鐘和貪睡功能。鬧鐘設定完成後, 數字顯示屏會顯示 🎵 「音樂提醒」圖標。啟動貪睡功能後, 數字顯示屏會顯示 Z² 圖標。
- 到達鬧鐘設定的時間時, 鬧鐘會持續響鈴1分鐘, 然後安靜一會兒, 之後再繼續響鈴。觸摸**S**按鈕關閉鬧鐘或觸摸 ^ (向上) 按鈕或 ▼ (向下) 按鈕 (S) 啟動貪睡模式。注意: 電量不足的情況下, 貪睡模式自動設定為60分鐘。

溫度切換設定:

參考圖3。

- 在正常模式下, 觸摸 ▼ (向下) 按鈕 切換 °F 和 °C 顯示。
- 濕度百分比將顯示在溫度下方。

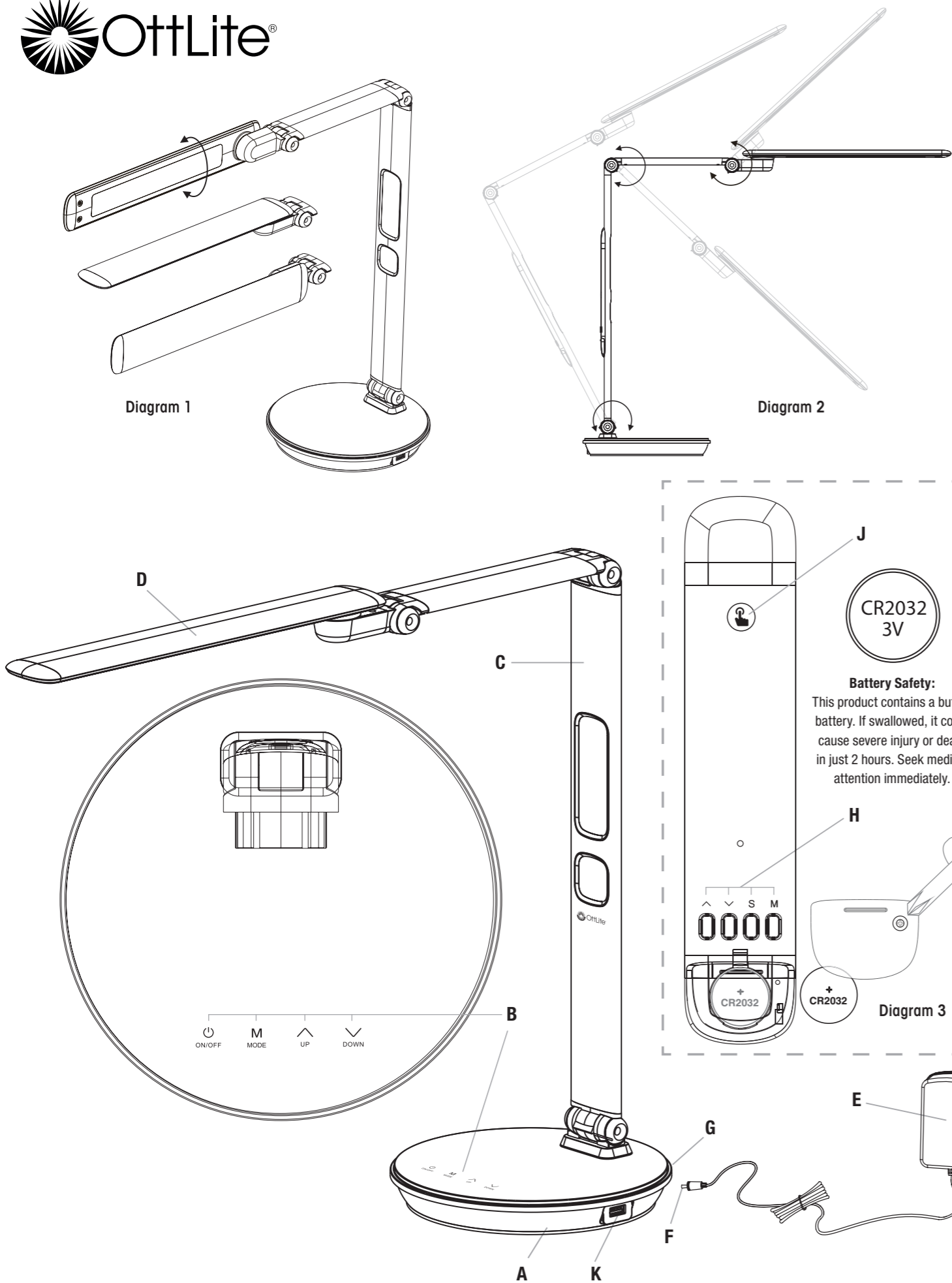
要調整顯示屏亮度, 可按 (J) 按鈕選擇合適的亮度設定。注意: 首次接通電源後, 顯示屏會自動設定在”最高”亮度。



LED 數位顯示檯燈

CSE6300Z-TW CSE63PNZ-TW 135962

S15FS



LED Desk Lamp with Digital Display

CSE6300Z-TW CSE63PNZ-TW 135962

S15FS

ENGLISH

CONGRATULATIONS!

You've purchased the finest in natural lighting technology with your new OttLite® product.

WARNING: To prevent electric shock, make sure the lamp is not plugged in until all steps are complete.

NOTE: THIS UNIT IS FULLY ASSEMBLED

1. Remove lamp from packing, placing lamp body base (A) flat on a steady surface.
2. Connect power adapter input (F) into connector (G) in the rear-bottom of the lamp.
3. Plug the power adapter (E) into a standard household outlet. **Note: Only use with the supplied power adapter to avoid damage or fire.**
4. Turn the lamp **ON & OFF** using power switch in touch panel (B) located on top of base (A).
5. Touch key panel (B) includes multiple "touch" keys that control the lamp's light color mode and brightness within each color mode. This lamp provides three color modes and five levels of brightness. See **Touch Key Panel (B) Instructions** section for operating instructions.
6. Control panel (H) is used to set the lamp's calendar, alarm setting and display screen light. See **Calendar and Clock Setting** section for operating instructions.
7. To reposition the light, hold base (A) steady and grasp either lamp body (C) or shade (D) depending on needed adjustment
8. Refer to **Diagrams 1 and 2** for lamp adjustment. **NOTE: DO NOT FORCE the shade or lamp body outside allowable adjustable range as excessive adjustment may cause damage.**

TOUCH KEY PANEL (B) INSTRUCTIONS:

To power lamp and operate LED settings, slightly touch required "key" to achieve the following:

- Turn lamp "ON/OFF": touch key as needed.
- To adjust brightness: touch or key as needed.
- To adjust lighting color mode: touch **M** key to switch light color mode; 2700K°, 4000K°, 5000K°.

CALENDAR AND CLOCK SETTING:

NOTE: Control Panel (H) to set Calendar and Clock is located on the back side of lamp body (C). Refer to Diagram 3.

- To set time, push **S** key and the "hour" will flicker, then touch (up) key and (down) key to adjust "hour," after "hour" setting, touch **S** key again to set the "minute," "year," "month" and "day."
- In setting mode, touch **M** to exit function or operation will stop in one minute.
- When not in setting mode, touch (up) key to switch between "12h" and "24h" display.

ALARM & SNOOZE FUNCTION SETTING:

- To set the alarm time, press **M** button located on control panel (H) to activate alarm setting mode. In alarm mode, touch **S** button to set alarm time sequence: "Hour," "Minute," "Snooze," "Music", then exit.
- Touch (up) key and (down) key to adjust alarm time sequence.
- To activate the alarm press **M** button to activate the alarm setting mode and then press (up) key and (down) key to turn **ON/OFF** alarm and snooze function. will light up on digital display to indicate alarm is set. **Z^z** will light up to indicate snooze is activated.
- When alarm time is reached, alarm will ring for 1-minute, then snooze and ring again. Touch **S** key to turn off alarm or touch (up) key or (down) key to activate snooze. **NOTE:** Snooze defaults to 60-minutes, if loss of power occurs.

TEMPERATURE SWITCH SETTING:

Refer to Diagram 3.

- In normal mode, touch (down) key to switch between °F and °C display.
- Percent humidity will display below temperature.

To adjust display screen brightness, touch button (J) to choose suitable brightness setting. **NOTE:** Display screen defaults to "highest" brightness setting when power initially applied.

LED Desk Lamp with Digital Display

CONTROL PANEL (H) icon legend

S (setting) button – to set calendar; in alarm mode, push **S** key to turn off alarm.

M (mode) button – push to set alarm and snooze

(up) button – In setting mode, push to increase.

(down) button – In setting mode, push to decrease.

CAUTION! DEVICE MAY BECOME WARM DURING CHARGING. THIS IS NORMAL AND PART OF THE PROCESS. CHARGING TIMES VARY BY DEVICE

BATTERY REPLACEMENT

- This lamp uses a CR2032 battery. For battery replacement see diagram 3. Battery compartment is located on the backside of lamp body (C).
- To remove/install button cell battery: use a screwdriver to remove screw, then remove battery compartment door located in the lower part of lamp body section (C) on back-side of lamp. Turn screw counter clock-wise to remove and clock-wise to install. Button cell battery is to be installed with the "+" or flat side facing upward.

SAFETY WARNING:

- **CAUTION: DO NOT INGEST BATTERY; CHEMICAL BURN HAZARD!**
- This lamp contains a coin/button cell battery. If the coin/button cell battery is swallowed, it can cause severe internal burns in just two hours and can lead to death.
- Keep new and used batteries away from children.
- If the battery compartment does not close securely, stop using the product and keep it away from children.
- If you think batteries might have been swallowed or placed inside any part of the body, seek immediate medical attention.

NOTE: Coin/button cell batteries are small, single cell devices having a diameter greater than their height.

BATTERY DISPOSAL: battery disposal should be in compliance with local regulations pertaining to the disposal of hazardous materials. **DO NOT INCINERATE.**

SAFETY WARNING: TO REDUCE THE RISK OF FIRE, ELECTRIC SHOCK, OR INJURY TO PERSONS

1. Turn lamp off and **WAIT UNTIL LAMP HEAD (D) AND ADAPTER (E) ARE COOL** before handling.
2. The LED panel located in shade (D) might get hot after several hours of continuous use **DO NOT** place your hands directly on LED light panel.
3. Never use with an extension cord unless the plug can be fully inserted into the receptacles in the extension cord.
4. Do not alter the plug.
5. The lamp head included with this unit cannot be replaced by the consumer.
6. **INDOOR USE ONLY.**

NOTE: The important safety instructions appearing in this instruction sheet are not meant to cover all possible conditions and situations that may occur. It must be understood that common sense, caution, and care must be used with any electrical product.

CAUTION! IF THE EXTERNAL FLEXIBLE CABLE OR CORD OF THIS LUMINAIRE IS DAMAGED, IT SHALL BE EXCLUSIVELY REPLACED BY THE MANUFACTURER OR ITS SERVICE AGENT OR A SIMILAR QUALIFIED PERSON IN ORDER TO AVOID A HAZARD. INDOOR USE ONLY.

CAUTION! THE LIGHT SOURCE OF THIS LUMINAIRE IS NOT REPLACEABLE; WHEN THE LIGHT SOURCE REACHES ITS END OF LIFE THE WHOLE LUMINAIRE SHALL BE REPLACED.

CAUTION: Any change or modification to product not expressly recognized by OttLite Technologies voids OttLite's responsibility for proper function of product.

POWER ADAPTER SPECIFICATION:

Input: AC 100-240V, 50/60 Hz, 0.8A

Output: 24V DC, 1.25A with a Male DC Plug

THIS LAMP CONTAINS a 5V, 2.1A USB output port (K) located on the side of lamp. USB port can charge items such as tablets, cellular phones, etc.