

歡迎使用歐樂B!

使用本牙刷前，請閱讀使用說明，並保存本說明書，以備將來參考。

重要

- 定期檢查整個產品/電源線是否損壞。損壞或不能正常工作的部件不應再使用。如果產品/電源線損壞，請送到Oral-B服務中心。電源線無法更換。如果電源線損壞，則請將本產品棄置。不要自行修理產品。這可能會引起火災、電擊或傷害。
- 切勿將任何物件插入設備的任何開口處。
- 不建議3歲以下兒童使用。兒童和由於身體、感官和精神原因行動不便者及缺乏使用牙刷經驗和知識的人群需要在有人監護和指導下安全地使用本產品，並了解可能存在的危險。
- 切勿讓無人監護下的兒童清潔和維修保養本產品。
- 不要讓兒童玩耍本產品。
- 本產品僅用於刷牙。請勿咀嚼或咬著牙刷。切勿當成玩具或在無成人監督下使用。
- 本產品僅用於本說明書中描述的預期用途。不要使用製造商不推薦的附件。
- 僅可使用產品隨附的充電器。

警告

- 切勿將充電器擺放在水裡或其他液體中，或放置在容易掉落或拉入浴缸或洗手盆的地方。切勿接觸已掉入水中的充電器，請立即自插座拔除電源插頭。
- 本產品包含不可更換的電池。本產品沒有可供使用者使用的部件。除非在處理電池時，否則請勿打開和拆解本產品。請根據本說明書的處理和丟棄說明指引去處理電池及產品。
- 拔出插頭時請注意握住插頭而不是電源線。切勿濕手觸碰插頭，以免觸電。
- 如果你正在接受任何口腔護理治療，請在使用前諮詢牙科專家。

- 此產品屬個人清潔衛生產品，並非供牙科診所或醫院機構使用於多位使用者而設計。
- 小部件可能脫落，請放置在兒童接觸不到的地方。

為了避免因刷頭破損而可能會產生小部件導致窒息的危險或損傷牙齒：

- 每次使用前，請確保刷頭合適牢固地裝在刷柄上。如果刷頭不再適合妥當地裝上，請停止使用牙刷。切勿在沒有刷頭的情況下使用。
- 如果牙刷刷柄掉落，即使無外觀可見的損壞，也應在下次使用前更換刷頭。
- 每三個月更換一支刷頭，如果發現刷頭磨損，可提早更換。
- 每次使用後請適當地清潔刷頭(請參閱“清潔建議”一節)。正確的清洗確保牙刷的安全使用和使用壽命。
- 基於衛生原因，建議每個家庭成員使用個人刷柄和刷頭。

描述

- 1 刷頭
- 2 壓力控制指示燈/低電量/充電指示燈
- 3 開/關按鈕
- 4 模式按鈕
- 5 刷柄
- 6 充電器

規範

有關電壓規格，請參閱充電座底部。

噪音水準:68分貝(A)

充電和操作

您的牙刷具有防水手柄，電氣安全，並且設計用於浴室中使用。

- 您可以立即使用您的牙刷，或者簡單地將其放在插上電源的充電底座上(圖片1)進行短暫充電。
備註：如果電池耗盡(無充電指示燈亮起(2))，請至少充電30分鐘。
- 充電指示燈(2)在充電手柄時閃爍綠色。一旦充滿電，該燈就會關閉。充滿電可能需要大約24小時，這取決於室溫和電壓的變化。

注意：在深度放電之後，充電指示燈可能不會立即閃爍，可能需要最多30分鐘。

- 如果電池電量不足，電機會降低速度，智慧壓力感測器(2)會在短時間內閃爍紅色。一旦電池耗盡，電機停止；在電量耗盡的情況下，需要充電30分鐘才能用一次。
- 您可以將牙刷置於連接電源的充電器上，以保持電源滿格；產品可防止過度充電。

注意：請將刷柄置於室溫下，以便於電池的最佳維護。

注意：不要將刷柄暴露在高於50°C的溫度下。電池的建議環境溫度為5°C到35°C。

開始刷牙

刷牙技巧

- 用水潤濕牙刷頭，然後塗上任何種類的牙膏。為了避免濺起水花，在按下開關按鈕之前，先將刷頭對準你的牙齒。(圖片2)。
- 當使用Oral-B的擺動旋轉刷頭之一刷牙時，將刷頭從一顆牙移動到另一顆牙，每顆牙齒表面花幾秒鐘的時間(圖片3)。
- 使用任何刷頭，刷洗外側、內側和咀嚼面和4個口腔區域(圖片3)。你也可以諮詢你的牙醫或牙科保健師關於正確的刷牙方法。

使用電動牙刷的頭幾天，牙齦可能會輕微出血。一般來說，幾天後出血會停止。如兩星期後仍不消失，請向牙科醫生或牙科衛生員諮詢。如果你有敏感的牙齒和/或牙齦，Oral-B推薦使用《敏感》或《敏感專護》模式(可配合使用Oral-B溫和護理型刷頭)。

刷牙模式(根據型號而定)

您的牙刷提供不同的刷牙模式

《日常清潔》— 每日清潔的標準模式

《敏感護理》— 溫和，但徹底清潔敏感區域

《美白拋光》— 出色的磨光效果，適用於偶爾或每天使用。

《深層清潔》— 高轉速用於實現洗牙般潔淨感。

《牙齦呵護》— 溫柔按摩牙齦。

切換模式的方法：

您的牙刷會自動啟動上次選擇的模式。要切換到其他模式，使用中連續按壓模式按鈕（圖片4）。

壓力控制

如果壓力太大，會亮起紅燈，提醒你減少壓力。如果智慧壓力感測器顯示白色(或您預先選擇的顏色)，我們建議施加更多的壓力。

在過壓情況下，刷頭的運動將減少(在《日常清潔》、《深層清潔》和《敏感》模式下)。

使用過程中，通過適度按壓刷頭，定期檢查智慧壓力感測器的運行情況。

專業計時器

每隔30秒發出一個短促的聲音，提醒您均勻刷洗口腔的4個口腔區域。（圖片3）。

持續的短音意味著牙科專家建議的2分鐘刷牙時間結束。

即使在刷牙過程中刷柄短暫關閉，計時器也能記住刷牙時長。如果暫停時間超過30秒或將刷柄放在插入式充電器上，計時器將重置。

刷頭

Oral-B提供多種不同的Oral-B牙刷頭，只適合您的Oral-B 刷柄。

Oral-B 柔和敏感型刷頭



具備常規刷毛和超細刷毛的結合，以清潔牙齒表面，同時提供溫和的刷牙體驗，專注在牙齦上。

Oral-B 多動向交叉刷頭



我們最先進的刷頭。傾斜的刷毛可進行精確的清潔，去除和消除牙菌斑。

大多數Oral-B刷頭都配有INDICATOR®刷毛，以幫助您監控刷頭更換的需求。通過每天早晚兩次，每次兩分鐘的徹底刷牙，約在3個月內，刷毛的顏色將在一半處褪色，表明需要更換刷頭。如果刷毛在顏色褪去之前分散開來，可能表示您對牙齒和牙齦施加了過多壓力。

我們不建議在矯正器上使用Oral-B「FlossAction」或Oral-B「3D White」刷頭。您可以使用Oral-B「Ortho」刷頭，它專門設計用於清潔矯正器和牙線周圍。

清潔建議

刷完牙後，啟動刷柄，用流動的水沖洗刷頭。關閉並拆下刷頭。分別在自來水下清洗刷柄和刷頭，然後在重新組裝之前擦乾。在清潔前拔掉充電器 (6)。充電器 (6) 只應使用濕布清潔 (圖片5)。

若有變更請恕不另行通知。

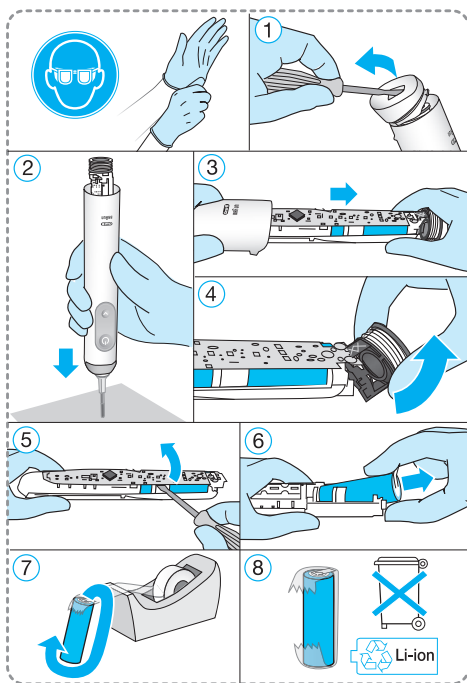
環保注意事項

本產品含有電池與/或可回收電子廢棄物。為了保護環境，請勿在棄置時將本產品與家居垃圾一起處理，請將其送至您本地區提供的電子廢棄物回收點。



產品使用壽命結束時取出電池

除了要丟棄電池以外請勿拆解本產品。請在取出之前先將電池耗盡。在取出電池丟棄之前，請先穿上保護服裝(手套、護目鏡等)以免電池滲漏時接觸到皮膚。請注意不要讓正(+)負(-)極接觸形成短路。請將端子絕緣(例如用膠帶貼住)並放進塑膠袋中棄置。



依圖示打開刷柄取出電池，回收電池請根據當地環境法規將整組產品丟棄。

請注意！一旦拆開刷柄即損壞本產品，將不再享受保固服務。



廢電池請回收

保固

本公司針對本產品從採購當日起算提供2年的保固。

在保固有效期間本公司將免費去除任何因材料或工藝所導致的任何產品瑕疵，修理或更換產品得依本公司的選擇而定。

由於產品可取得性之故，本公司可能會以不同顏色或同等機型的產品更換。

本保固服務適用於由Braun/Oral-B或其指定經銷商供貨之各個國家。保固服務並不包含：因不當使用、正常磨耗或使用所導致之損壞(尤其是刷頭)以及對本產品價值或操作產生可忽略影響的任何瑕疵。

若本產品交由非授權人員維修或者使用非Braun/Oral-B原廠零件時，將導致保固失效。

要在保固有效期間獲得服務時，請將整組產品連同收據一起交由或送交授權的Oral-B Braun客服中心。

保固更換刷頭

若充電刷柄的損壞是因為使用非Oral-B更換刷頭所引起時，將會導致Oral-B保固失效。

Oral-B不建議使用非Oral-B的更換刷頭。

- Oral-B無法控制非Oral-B更換刷頭的品質。因此本公司無法確保非Oral-B更換刷頭可提供於初次購買時連同充電刷柄所述之潔牙效果。
- Oral-B 無法保證非Oral-B更換刷頭可以確實安裝。
- Oral-B無法預測非Oral-B更換刷頭對刷柄磨耗的長期效應。

所有Oral-B更換刷頭均具備Oral-B標誌且符合Oral-B的高品質標準。Oral-B並未以任何其他廠牌名稱販售。

English

Welcome to Oral-B!

Before operating this toothbrush, please read these instructions and save this manual for future reference.

IMPORTANT

- Periodically check the entire product/cord for damage. A damaged or non-functioning unit should no longer be used. If the product is damaged, take it to an Oral-B Service Centre. Do not modify or repair the product. This may cause fire, electric shock or injury.
- Never insert any object into any opening of the appliance.
- Usage by children under age 3 is not recommended. Toothbrushes can be used by children and persons with reduced physical, sensory or mental capabilities or lack of experience and knowledge, if they have been given supervision or instruction concerning use of the appliance in a safe way and understand the hazards involved.
- Cleaning and maintenance shall not be performed by children.
- Children shall not play with the appliance.
- For tooth brushing only. Do not chew or bite on brush. Do not use as a toy or without adult supervision.
- Use this product only for its intended use as described in this manual. Do not use attachments which are not recommended by the manufacturer.
- Only use charger provided with your appliance.

WARNING

- Do not place the charger in water or liquid or store where it can fall or be pulled into a tub or sink. Do not reach for it when fallen into water. Unplug immediately.
- This appliance contains batteries that are non-replaceable. Appliance has no user serviceable parts. Do not open and disassemble device except when disposing of the battery. Use handling and disposal instructions of the battery/device as described in this manual.
- When unplugging, always pull the power plug instead of the cord. Do not touch the power plug with wet hands. This can cause an electric shock.
- If you are undergoing treatment for any oral care condition, consult your dental professional prior to use.
- This toothbrush is a personal care device and is not intended for use on multiple patients in a dental practice or institution.
- Small parts may come off, keep out of reach of children.

To avoid brush head breakage which may generate a small parts choking hazard or damage teeth:

- Prior to each use, ensure the brush head fits well. Discontinue use of the toothbrush, if brush head no longer fits properly. Never use without a brush head.

- If the toothbrush handle is dropped, the brush head should be replaced before the next use even if no damage is visible.
- Replace brush head every 3 months or sooner if brush head becomes worn.
- Clean brush head properly after each use (see «Cleaning recommendations» paragraph). Proper cleaning ensures the safe use and functional life of the toothbrush.

Description

- 1 Brush head
- 2 Pressure control light / low charge-/ charging indicator
- 3 On/off button
- 4 Mode button
- 5 Handle
- 6 Charger

Specifications

For voltage specifications refer to the bottom of the charging unit.

Noise level: ≤ 68 dB (A)

Charging and Operating

Your toothbrush has a waterproof handle, is electrically safe and designed for use in the bathroom.

- You may use your toothbrush right away or charge it briefly by placing it on the plugged-in charger (picture 1).
Note: In case the battery is empty (no charging light illuminated (2) while charging or no reaction when pressing the on/off button (3)), charge at least for 30 minutes.
- The charge indicator light (2) flashes green while the handle is being charged. Once it is fully charged, the light turns off. A full charge may take approximately 24 hours. This varies by room temperature and voltage.
Note: After deep discharge, the charge indicator light might not flash immediately; it can take up to 30 minutes.
- If the battery is running low, the charge indicator light (2) flashes red for a few seconds when turning your toothbrush off and the motor is reducing its speed. Once the battery is empty, the motor will stop; it will need at least a 30-minute charge for one usage.
- You can always store the handle on the plugged-in charging unit to maintain it at full power; a battery overcharge is prevented by device.
Note: Store handle at room temperature for optimal battery maintenance.
Caution: Do not expose handle to temperatures higher than 50 °C. Recommended ambient temperature for charging is 5 °C to 35 °C.

Using your toothbrush

Brushing technique

- Wet brush head and apply any kind of toothpaste. To avoid splashing, guide the brush head to your teeth before switching on the appliance (picture 2).
- When brushing your teeth with one of the **Oral-B oscillating-rotating brush heads** guide the brush head slowly from tooth to tooth, spending a few seconds on each tooth surface (picture 3).
- With any brush head start brushing the outsides, then the insides and finally the chewing surfaces. Brush all four quadrants of your mouth equally. Do not press too hard, simply let the brush do all the work (picture 3). You may also consult your dentist or dental hygienist about the right technique for you.

In the first days of using any electric toothbrush, your gums may bleed slightly. In general, bleeding should stop after a few days. Should it persist after 2 weeks, please consult your dentist or dental hygienist. If you have sensitive teeth and/or gums, Oral-B recommends using the «Sensitive» mode (depending on model) (optional in combination with an Oral-B «Sensitive Clean» brush head).

Brushing modes (depending on model)

Your toothbrush offers different brushing modes:

- «Daily Clean» – Standard mode for daily cleaning
- «Sensitive» – Gentle, yet thorough cleaning for sensitive areas
- «3D White» – Exceptional polishing for occasional or everyday use

How to switch between modes:

Your toothbrush automatically starts in the mode selected last. To switch to other modes, successively press the mode button during use (picture 4).

Pressure Control

If too much pressure is applied, the pressure control light (2) will light up in red, notifying you to reduce pressure. In addition, the pulsation of the brush head will stop and the oscillation movement of the brush head will be reduced (during «Daily Clean», «Pro Clean» and «Sensitive» mode). Periodically check the operation of the pressure control by pressing moderately on the brush head during use.

Professional Timer

A short stuttering sound at 30-second intervals reminds you to brush all four quadrants of your mouth equally (picture 3). A long stuttering sound indicates the end of the professionally recommended 2-minute brushing time. If the toothbrush is turned off during brushing, the reached brushing time will be memorized for 30 seconds. When pausing longer than 30 seconds the timer resets.

Brush heads

Oral-B offers you a variety of different Oral-B brush heads that fit your Oral-B toothbrush handle.



Oral-B Sensitive Clean brush head

features a combination of regular bristles to clean teeth surfaces and ultrathin bristles for a gentle brushing experience on the gumline.



Oral-B CrossAction brush head

Our most advanced brush head. Angled bristles for a precise clean. Lifts and powers away plaque.

Most Oral-B brush heads feature INDICATOR® bristles to help you monitor brush head replacement need. With thorough brushing, twice a day for two minutes, the colour will fade halfway approximately within 3 months, indicating the need to exchange your brush head. If the bristles splay before the colour recedes, you may exert too much pressure on teeth and gums.

We do not recommend using the Oral-B «FlossAction» or Oral-B «3D White» brush head with braces. You may use the Oral-B «Ortho» brush head, specifically designed to clean around braces and wires.

Cleaning recommendations

After brushing, rinse your brush head under running water with the handle switched on. Switch off and remove the brush head. Rinse both parts separately under running water then wipe them dry before reassembling. Unplug the charger (6) before cleaning. The charger (6) should be cleaned with a damp cloth only (picture 5).

Subject to change without notice.

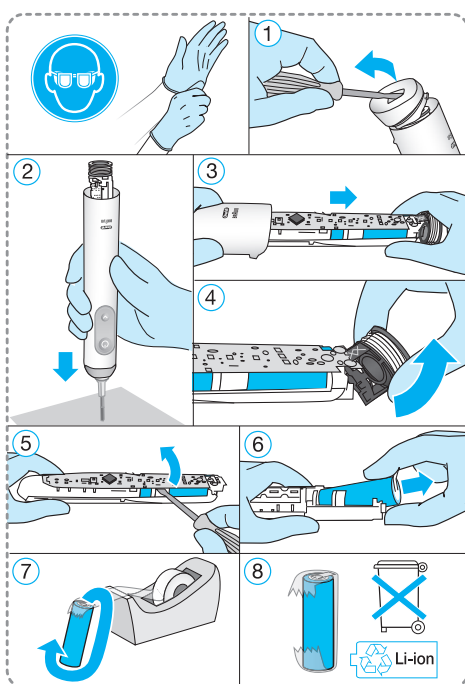
Environmental Notice

Product contains batteries and/or recyclable electric waste. For environment protection do not dispose in household waste, but for recycling take to electric waste collection points provided in your country.



Battery removal at the end of the product's useful life

Do not disassemble the product except when disposing of the battery. Run down battery before removing. When taking out the battery for disposal, use protective clothing (gloves, safety glasses, etc.) to omit skin contact whilst leaking batteries. Use caution not to short the positive (+) and negative (-) terminals. Insulate terminals (e.g. with tape) and put the battery in a plastic bag for disposal.



Open the handle as shown, remove the battery and dispose of it according to local environmental regulations.

Caution! Opening the handle will destroy the appliance and invalidate the warranty.

Guarantee

We grant 2 years limited guarantee on the product commencing on the date of purchase. Within the guarantee period we will eliminate, free of charge, any defects in the appliance resulting from faults in materials or workmanship, either by repairing or replacing the complete appliance as we may choose. Depending on availability replacement of a unit might result in a different colour or an equivalent model.

This guarantee does not cover: damage due to improper use, normal wear or use, especially regarding the brush heads, as well as defects that have a negligible effect on the value or operation of the appliance.

The guarantee becomes void if repairs are undertaken by unauthorised persons and if original Braun/Oral-B parts are not used.

To obtain service within the guarantee period, hand in or send the complete appliance with your sales receipt to an authorised Oral-B Braun Customer Service Centre.

Warranty replacement brush heads

Oral-B warranty will be voided if electric rechargeable handle damage is found to be attributed to the use of non-Oral-B replacement brush heads.

Oral-B does not recommend the use of non-Oral-B replacement brush heads.

- Oral-B has no control over the quality of non-Oral-B replacement brush heads. Therefore, we cannot ensure the cleaning performance of non-Oral-B replacement brush heads, as communicated with the electric rechargeable handle at time of initial purchase.
- Oral-B cannot ensure a good fit of non-Oral-B replacement brush heads.
- Oral-B cannot predict the long-term effect of non-Oral-B replacement brush heads on handle wear.

All Oral-B replacement brush heads carry the Oral-B logo and meet Oral-B's high quality standards. Oral-B does not sell replacement brush heads or handle parts under any other brand name.

Oral-B®

designed
by **BRAUN**



刷柄型號 3792
充電器型號 3757



21041885

Internet:

www.oralb.com

www.service.oralb.com

Charger type 3757

Handle type 3792

21041885/I-24
CN/EN